

Williams Lane Morden, SM4 6EY

Offers Over £625,000 Freehold

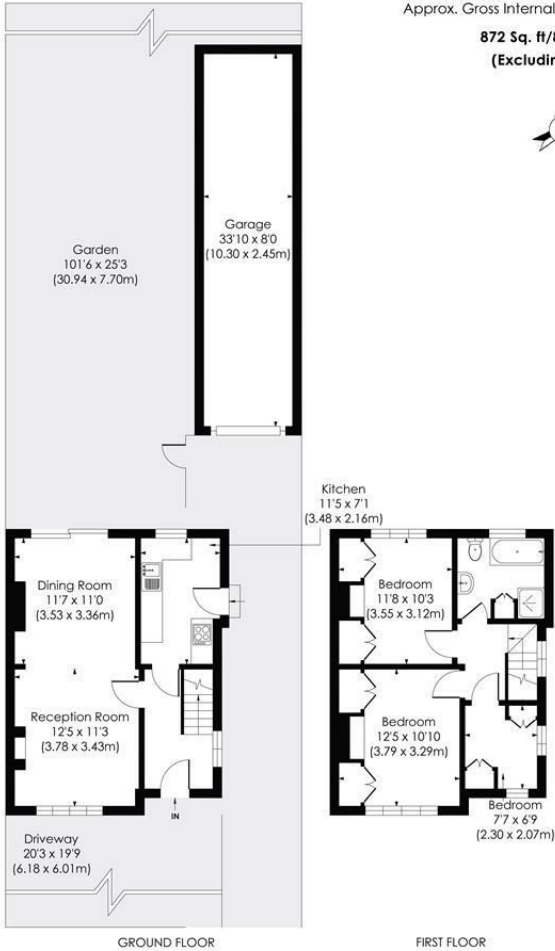


A three-bedroom semi-detached family home offered chain-free on a quiet cul-de-sac in Ravensbury Park, SM4. The property is ideally located for commuters, offering easy access to Morden Tube Station (Northern Line) and local Tramlink services. The layout comprises a double-length reception room and a galley kitchen, both opening onto a 100ft sunny private garden. Upstairs provides two double bedrooms, one single bedroom, and a three-piece family bathroom. Externally, the property features driveway parking and a spacious garage, with excellent potential to extend.

WILLIAMS LANE, SM4

Approx. Gross Internal Floor Area

872 Sq. ft/81.02 Sq. m
(Excluding Garage)

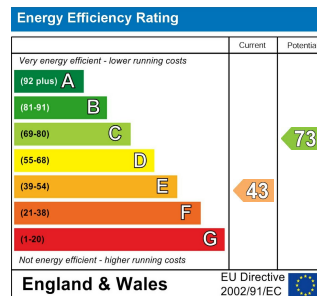


pixangle
PROPERTY MARKETING

This floor plan has been prepared for the purpose of illustration only in accordance with the latestRICS code of measuring practice and is not to scale. All measurements and areas are approximate and whilst every effort has been made to ensure the accuracy of the plan contained here, no responsibility is taken for any error, omission or misstatement.

© Pixangle Property Marketing Ltd. info@pixangle.com Tel: 0208 870 2118

- Semi Detached
- Three Bedrooms
- Chain Free
- Sought After Cul-De-Sac
- 100ft West Facing Garden
- Off Street Parking & Double Garage
- Near Morden Tube & Tramlink
- Potential To Extend (STPP)
- Council Tax Band - E
- EPC - E



For Free Mortgage Quote and Best Mortgage Rates, call Ellisons Mortgage Advisor on 0208 543 1166



Although these particulars are believed to be correct, their accuracy is not guaranteed and they do not form part of any contract.

Celebrating 30 years
of successful Sales and Lettings in Merton

